

USER MANUAL

Wireless Dual-Mode(ANT+ BLE) Speed Cadence Sensor

Version: 2.1

- English -

1. Product Introduction

Thank you for purchasing our wireless dual-mode(ANT+ BLE) speed cadence sensor. This product is one of the bicycle peripheral products of our company, helping you to manage your cycling scientifically. This user manual will help you to use the product better, please keep it for reference.

2.Product Accessories



Speed cadence sensor



Rubber mat (flat, curved)



band(large, small)



User manual

1 English

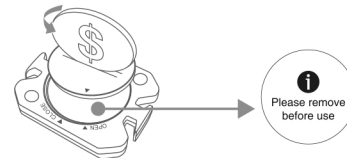
3. Basic Parameters

Sensor size: 38 x 30 x 10 mm
Sensor weight: 10 g
Electrical source: CR2032 220 mAh
Battery life: 300h for speed mode
300h for cadence mode
Waterproof grade: IP67
Working temperature: -10°C ~ 50°C
Communication: ANT+ /8m, BLE/10m
Measurement extremum: 120km/h for speed
300rpm for cadence

Outer case: ABS
Color: Black

2 English

4. Remove the insulation sheet before use



1. Twist the battery door with a coin in OPEN direction, open the battery door, remove the battery

2. Take out the insulating sheet

3 English

5. Function and operation

There are two modes of speed and cadence of the product, which correspond to speed monitoring and cadence monitoring. Mode switching through power on, namely remove the battery and load it again. After the battery loading, there will be a light on. Different light color corresponds to different mode.

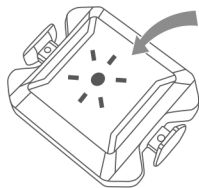
5.1 Mode switching

a. Twist the battery door with a coin in OPEN direction, open the battery door, remove the battery and load it again, after that, twist the battery door in CLOSE direction, close the battery door.



4 English

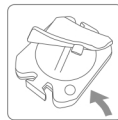
b. After the battery loading, there will be a light on. Red light indicates speed mode, blue light indicates cadence mode.



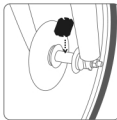
5.2 Installation

a. Installation for speed mode

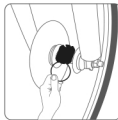
Buckle the curved rubber mat onto the back of the sensor, then bind the sensor with the large rubber band onto the wheel axle.



1



2



3



4

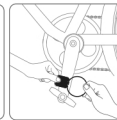
6 English

b. Installation for cadence mode

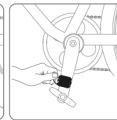
Buckle the flat rubber mat onto the back of the sensor, then bind the sensor with the small rubber band onto the pedal crank.



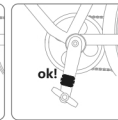
1



2



3



4

7 English

6. Compatible with varied App



Zwift



Wahoo Fitness



Openrider

Note: 1. Cannot be directly connected via Bluetooth in the mobile phone settings, must be connected in the APP;
2. Individual APPs, such as Wahoo Fitness, can only connect with one sensor;
3. The APP icon displayed above is copyrighted by the APP development company.

8 English

7. Disclaimer

- The information contained in this manual just for reference. The product described above may be subject to alteration owing to the manufacturer's continuing research and development plans, without making an announcement in
- We shall not make any statement or warranty about this manual or the contained product.
- We shall not bare any legal responsibility for any direct or indirect, accidental or special damages, losses and expenses arising from or in connection with this manual or the

9 English